



# AUBURN OUTREACH OFFICE

# AUBURN OUTREACH OFFICE

# AUBURN OUTREACH OFFICE

## AUBURN RESOURCES & FOOD PANTRY

## AUBURN RESOURCES & FOOD PANTRY

## AUBURN RESOURCES & FOOD PANTRY

CSS Auburn offers assistance for those living in Johnson, Nemaha, Otoe, Pawnee, and Richardson counties.

CSS Auburn offers assistance for those living in Johnson, Nemaha, Otoe, Pawnee, and Richardson counties.

CSS Auburn offers assistance for those living in Johnson, Nemaha, Otoe, Pawnee, and Richardson counties.

To request food pantry items, personal care items, or diapers, please call 402.327.6242.

To request food pantry items, personal care items, or diapers, please call 402.327.6242.

To request food pantry items, personal care items, or diapers, please call 402.327.6242.

To request financial assistance, please visit [csshope.org/FSS](http://csshope.org/FSS)



To request financial assistance, please visit [csshope.org/FSS](http://csshope.org/FSS)



To request financial assistance, please visit [csshope.org/FSS](http://csshope.org/FSS)



CSS Regional Contact:  
April Boellstorff  
Regional Director | Auburn  
402.327.6242 | [aboellstorff@csshope.org](mailto:aboellstorff@csshope.org)

CSS Regional Contact:  
April Boellstorff  
Regional Director | Auburn  
402.327.6242 | [aboellstorff@csshope.org](mailto:aboellstorff@csshope.org)

CSS Regional Contact:  
April Boellstorff  
Regional Director | Auburn  
402.327.6242 | [aboellstorff@csshope.org](mailto:aboellstorff@csshope.org)

*This institution is an equal opportunity provider.*

*This institution is an equal opportunity provider.*

*This institution is an equal opportunity provider.*

For additional resources, visit:  
[findhelp.org](http://findhelp.org)    [211.org](http://211.org)

For additional resources, visit:  
[findhelp.org](http://findhelp.org)    [211.org](http://211.org)

For additional resources, visit:  
[findhelp.org](http://findhelp.org)    [211.org](http://211.org)

## IMMIGRATION LEGAL SERVICES

## IMMIGRATION LEGAL SERVICES

## IMMIGRATION LEGAL SERVICES

CSS is certified by the Department of Justice to practice immigration law with accredited legal representatives, who speak a variety of languages. Immigration services include naturalization, permanent residency, work authorization, and more. Contact Immigration Legal Services at 402.385.9074 or [immigration@csshope.org](mailto:immigration@csshope.org).

CSS is certified by the Department of Justice to practice immigration law with accredited legal representatives, who speak a variety of languages. Immigration services include naturalization, permanent residency, work authorization, and more. Contact Immigration Legal Services at 402.385.9074 or [immigration@csshope.org](mailto:immigration@csshope.org).

CSS is certified by the Department of Justice to practice immigration law with accredited legal representatives, who speak a variety of languages. Immigration services include naturalization, permanent residency, work authorization, and more. Contact Immigration Legal Services at 402.385.9074 or [immigration@csshope.org](mailto:immigration@csshope.org).

## VOLUNTEER WITH US

Our mission is about service to our neighbor, including the disabled, the elderly, the newcomer and the poor among us. Help us fulfill our mission by submitting an online application today:

[csshope.org/volunteerauburn](http://csshope.org/volunteerauburn)

## DONATE

To support our work with an online donation, visit [csshope.org/donate](http://csshope.org/donate). You may specify which region or program you would like to support. You may also mail a check to Catholic Social Services of Southern Nebraska, PO Box 30425, Lincoln NE 68503. For Planned Giving, contact our Marketing & Development Department:

402.327.6235 or [hello@csshope.org](mailto:hello@csshope.org)



### ABOUT CSS

#### Our Mission

To perform the **Works of Mercy** in response to the **call of God**.

#### Our Vision

To inspire **hope and love** in every encounter.

#### Our Core Values

Dignity | Integrity | Empathy | Trust | Sustainability

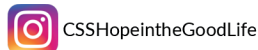
## CONNECT WITH US!

Catholic Social Services of Southern Nebraska

2241 O Street | Lincoln, NE 68510

402.474.1600

[hello@csshope.org](mailto:hello@csshope.org) | [csshope.org/Auburn](http://csshope.org/Auburn)



*#HopeInTheGoodLife*

v07.01.26

## VOLUNTEER WITH US

Our mission is about service to our neighbor, including the disabled, the elderly, the newcomer and the poor among us. Help us fulfill our mission by submitting an online application today:

[csshope.org/volunteerauburn](http://csshope.org/volunteerauburn)

## DONATE

To support our work with an online donation, visit [csshope.org/donate](http://csshope.org/donate). You may specify which region or program you would like to support. You may also mail a check to Catholic Social Services of Southern Nebraska, PO Box 30425, Lincoln NE 68503. For Planned Giving, contact our Marketing & Development Department:

402.327.6235 or [hello@csshope.org](mailto:hello@csshope.org)



### ABOUT CSS

#### Our Mission

To perform the **Works of Mercy** in response to the **call of God**.

#### Our Vision

To inspire **hope and love** in every encounter.

#### Our Core Values

Dignity | Integrity | Empathy | Trust | Sustainability

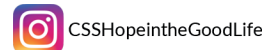
## CONNECT WITH US!

Catholic Social Services of Southern Nebraska

2241 O Street | Lincoln, NE 68510

402.474.1600

[hello@csshope.org](mailto:hello@csshope.org) | [csshope.org/Auburn](http://csshope.org/Auburn)



*#HopeInTheGoodLife*

v07.01.26

## VOLUNTEER WITH US

Our mission is about service to our neighbor, including the disabled, the elderly, the newcomer and the poor among us. Help us fulfill our mission by submitting an online application today:

[csshope.org/volunteerauburn](http://csshope.org/volunteerauburn)

## DONATE

To support our work with an online donation, visit [csshope.org/donate](http://csshope.org/donate). You may specify which region or program you would like to support. You may also mail a check to Catholic Social Services of Southern Nebraska, PO Box 30425, Lincoln NE 68503. For Planned Giving, contact our Marketing & Development Department:

402.327.6235 or [hello@csshope.org](mailto:hello@csshope.org)



### ABOUT CSS

#### Our Mission

To perform the **Works of Mercy** in response to the **call of God**.

#### Our Vision

To inspire **hope and love** in every encounter.

#### Our Core Values

Dignity | Integrity | Empathy | Trust | Sustainability

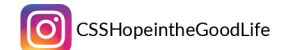
## CONNECT WITH US!

Catholic Social Services of Southern Nebraska

2241 O Street | Lincoln, NE 68510

402.474.1600

[hello@csshope.org](mailto:hello@csshope.org) | [csshope.org/Auburn](http://csshope.org/Auburn)



*#HopeInTheGoodLife*

v07.01.26